

SAMSUNG



Connected worker solutions

Nothing stands between you and your mission

Samsung connected worker solutions empower the government workforce with a modern mobile experience that supports the toughest missions in the field, while staying connected and productive at the edge. Our ecosystem of devices is certified for harsh environments, yet versatile enough for everyday use.¹

Seamless connection across modern networks and powerful on-device AI enable frictionless productivity in the field, in the vehicle or in the office.^{3,4} Designed for all levels of government, our trusted solutions are simple to deploy, offer zero-touch management and are certified to the highest government security standards.⁵

Key features



Hardened, certified and field-ready for the harshest environments.^{1,2}



Powerful on-device AI features for decisions at mission speed.⁵



Seamless connectivity across devices and modern communications networks – LMR, LTE, satellite.³



One device that does it all from the field, vehicle or office.



Accurate GPS to track personnel location, improving coordination and response.⁶



Government-grade protection with Knox security built in from the chip up.⁴

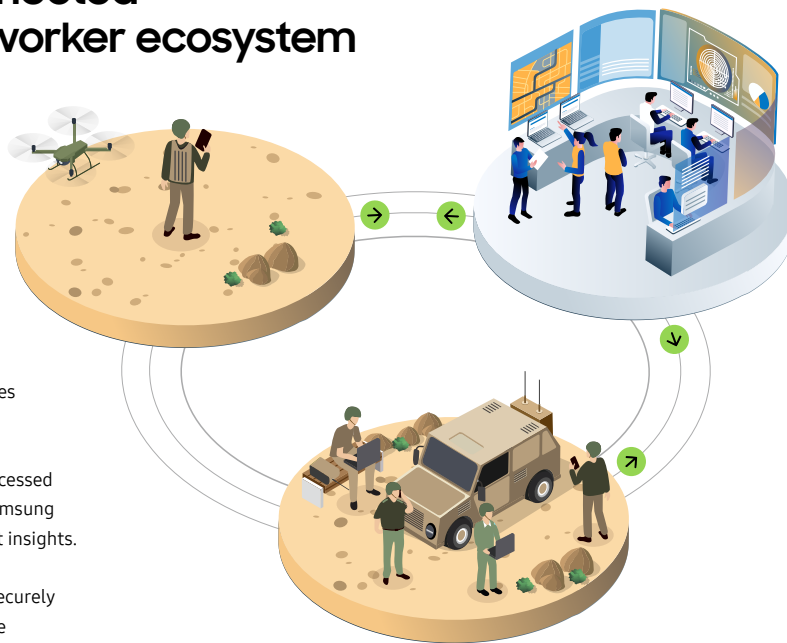


Long-lasting battery for use in the field without interruption.⁷

Samsung connected government worker ecosystem

Collect, Compute, Connect

- Government personnel on the front line use Samsung field-ready smartphones and tablets as connected work platforms to capture data from devices, sensors, cameras, drones and more.
- Mission data is intelligently processed in real-time at the edge with Samsung on-device AI features for instant insights.
- Samsung devices reliably and securely connect across advanced mobile networks (LMR, LTE, satellite) to share insights with teams and partners from the furthest reaches of the mission's edge to the centralized command post.



Powering intelligent C2 from the edge

- Centralized government resources stitch together, multiple real-time data feeds from across domains and agency boundaries for a unified view of operations.
- Hybrid teams of human analysts and AI resources apply operational policies and procedures for greater insights and improved command and control in rapidly evolving scenarios.
- Insights and actions are instantly distributed across multi-agency teams in the field using situational awareness applications, like ATAK on Samsung smartphones and tablets.

Act with confidence

Connected government workers are more empowered to make better decisions, faster to increase mission outcomes.

Connected worker solutions at a glance

A versatile, end-to-end mobile ecosystem that you can trust for years to come



Modern smartphones, tablets and wearables as tough as your mission

Samsung Galaxy smartphones, tablets and wearables combine future-ready, modern capabilities with the durability and security you need to ensure they are always fit-for-purpose.



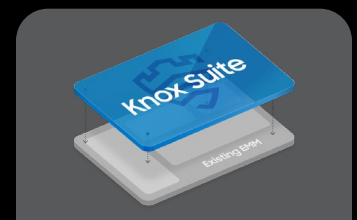
New levels of mobile productivity from DeX in Vehicle that are redefining the field office

Samsung DeX delivers a modern, connected experience with a smartphone that can transform into a powerful and cost-effective in-vehicle computer.



Open and flexible OS and app ecosystem to adapt to your workflow

Galaxy devices operate on the widely adopted Android OS and integrate seamlessly with the infrastructure and applications government agencies rely on.



Centralized security, visibility and management platform that keeps you in control

Knox Suite delivers streamlined onboarding, granular visibility and zero-touch management across your entire device fleet – all backed by government-grade security.

Purpose-built for the modern mission

Field-first mobile solutions that empower government workers



Law enforcement operations

Enable federal law enforcement agents to maintain constant situational awareness through secure, real-time communication. High-accuracy GPS allows commanders to track agent locations, improving coordination and response.⁶ ATAK integrates data onto a 3D map for rapid sharing of mission-essential information and faster decision-making. In remote areas, agents can pair Samsung devices with LMR systems for reliable, always-on connectivity.³



Agricultural inspections

Equip agricultural inspectors with modern, secure mobile technology that streamlines every stage of the inspection process. Tablets or smartphones provide real-time, on-site access to regulatory databases, facility histories and inspection guidelines. Inspectors can easily capture photos and videos, collect electronic signatures and upload evidence into agency systems for faster analysis. Secure communication tools facilitate real-time collaboration with colleagues, laboratories and headquarters, even from remote or international locations.³



Emergency response coordination

Empower federal responders with uninterrupted situational awareness during fast-moving operations. High-accuracy GPS and ATAK give incident commanders a precise view of responder locations, improving both safety and response coordination.⁶ Teams can share mission-essential information instantly and accelerate decision-making. Responders can use mobile devices with LMR or satellite systems to ensure reliable, always-on connectivity when network infrastructure is damaged or overloaded.³

For complete product information and accessories, visit samsung.com/us/business/solutions/industries/government/health-and-human-performance insights.samsung.com Product support: 1-866-SAM4BIZ | Follow us: [youtube.com/samsungbizusa](https://www.youtube.com/samsungbizusa) [@SamsungBizUSA](https://twitter.com/SamsungBizUSA)

© 2025 Samsung Electronics America, Inc. Samsung, Galaxy S23 Tactical Edition, Galaxy Tab Active5 Tactical Edition, Knox, DeX and Dynamic AMOLED are all trademarks of Samsung Electronics Co., Ltd. Other company names, product names and marks mentioned herein are the property of their respective owners and may be trademarks or registered trademarks. Appearance of devices may vary. Screen images simulated. Printed in U.S.A. GOV-CWFED-DEC25

1. Consistent with IP68 rating, water resistant in up to 5 feet of water for up to 30 minutes. Rinse residue / dry after wet. 2. These devices passed military specification (MIL-STD-810H) testing against a subset of 21 specific environmental conditions, including temperature, dust, shock / vibration and low pressure / high altitude. Real-world usage varies from the specific environmental conditions used in MIL-STD-810H testing. Samsung does not guarantee device performance in all extreme conditions. Rinse residue / dry after wet. 3. Connectivity options may vary by device and geographic area. Talk to your Samsung Government Sales representative to learn more. 4. For a full list of Knox certifications, visit: <https://www.samsungknox.com/en/knox-platform/knox-certifications>. 5. Use of AI features is complimentary through 2025. Purchase may be required after complimentary period. Dates, availability and supported features may vary by app and country. Samsung Account login may be required to use certain Samsung AI features. Samsung does not make any promises, assurances or guarantees as to the accuracy, completeness or reliability of the output provided by AI features. 6. GPS accuracy may be affected by weather, atmosphere and other obstructions such as buildings and tall trees. 7. Typical value tested under third-party laboratory conditions. Typical value is the estimated average value considering the deviation in battery capacity among the battery samples tested under IEC 61960 standards. Rated (minimum) capacity is 4,900mAh. Actual battery life may vary depending on network environment, usage patterns and other factors. 8. Requires separate license.