

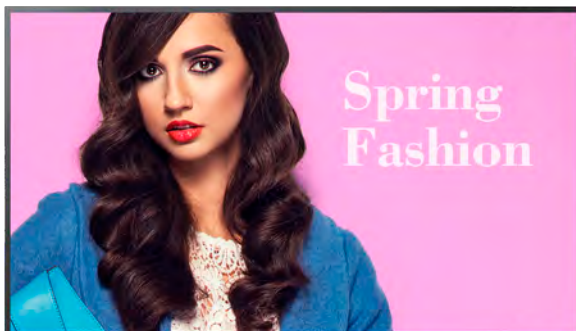
46.0"	UH46N-E	46.0"	UM46N-E
55.0"	UH55F-E	55.0"	UM55H-E



## Seamlessly brilliant video walls.

### Extremely Thin Bezels for Virtually Seamless Video Walls

Deliver deeper visual impact with extreme narrow bezel video walls from Samsung. Featuring a bezel-to-bezel width of just 1.7mm, these 55" and 46" displays will create a virtually seamless picture across multiple screens, for incredible impact. Factory calibration ensures consistent, natural color, while non-glare glass makes sure bright reflections don't get in the way of your beautiful message.



### Key Features



#### Bezel-to-Bezel Measurement of 1.7mm

Create virtually seamless video walls and deliver deeper visual impact. Extreme narrow bezel video walls feature a bezel-to-bezel width of just 1.7mm, for a near-seamless and captivating picture across multiple screens without interruption.



#### Achieve Brilliant, Glare-Free Picture Quality

Combined with a bright, non-glare panel, the extreme narrow bezel video wall delivers memorable content even under ambient light.



#### Reliable 24/7 Continuous Long-Term Operation

With continuous 24/7 operation, you can deliver vivid messages around the clock, without worrying about darkening panels.



#### Accurate, Factory-Calibrated Color

Factory calibration to precise Samsung specifications ensures uniform brightness and color across multiple displays, for gorgeous, consistent video walls. Users can also manage brightness and color uniformity with Samsung's Color Expert Pro, a powerful, free software program.



#### Easy, Cost-Saving Mobile Calibration

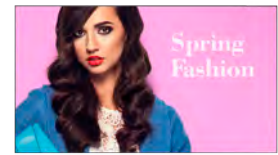
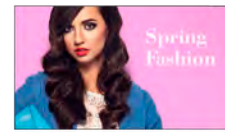
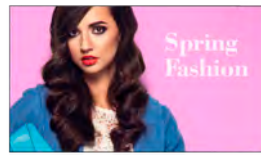
Samsung's Color Expert Pro Mobile solution provides quick and easy video wall calibration through a mobile camera. With an intuitive UI, even non-experts can adjust the white balance on all displays of a video wall simultaneously (up to 5x5), without the need for additional equipment.



#### Powerful UHD Viewing Experience

Users can configure impossible-to-ignore video walls through DisplayPort 1.2, even at UHD resolution. No PCs, additional graphic cards or splitters are required.

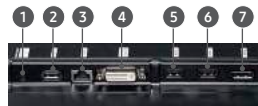
# Samsung UH/UM Extreme Narrow Bezel Video Wall Displays



Panel			UH46N-E	UH55F-E	UM46N-E	UM55H-E
Panel	Diagonal Size	Class	46"	55"	46"	55"
		Measured	45.9" / 116.8cm	54.6" / 138.7cm	45.9" / 116.8cm	54.6" / 138.7cm
	Type		D-LED DID	D-LED DID	D-LED DID	D-LED DID
	Resolution		1920 x 1080	1920 x 1080	1920 x 1080	1920 x 1080
	Pixel Pitch (mm)		0.53025mm (H) x 0.53025mm (V)	0.63mm (H) x 0.63mm (V)	0.53025mm (H) x 0.53025mm (V)	0.63mm (H) x 0.63mm (V)
	Active Display Area (mm)		1018.08mm x 572.67mm	1209.6mm x 680.4mm	1018.08mm x 572.67mm	1209.6mm x 680.4mm
	Brightness		Max 700 nits	Max 700 nits	Max 500 nits	Max 500 nits
	Contrast Ratio		4000:1	4000:1	4000:1	4000:1
	Viewing Angle (H/V)		178/178	178/178	178/178	178/178
	Response Time (G-to-G)		8ms	8ms	8ms	8ms
	Display Colors		8 bit - 16.7M	8 bit - 16.7M	8 bit - 16.7M	8 bit - 16.7M
	Color Gamut		72%	72%	72%	72%
	Operation Hour		24/7	24/7	24/7	24/7
	Panel Orientation		Landscape / Portrait	Landscape / Portrait	Landscape / Portrait	Landscape / Portrait
Anti-Glare Panel		25%	25%	25%	25%	
Display	Dynamic C / R		MEGA DCR	MEGA DCR	MEGA DCR	MEGA DCR
	H-Scanning Frequency / V-Scanning Frequency		30kHz ~ 81kHz / 48Hz ~ 75Hz	30kHz ~ 81kHz / 48Hz ~ 75Hz	30kHz ~ 81kHz / 48Hz ~ 75Hz	30kHz ~ 81kHz / 48Hz ~ 75Hz
	Maximum Pixel Frequency		148.5MHz	148.5MHz	148.5MHz	148.5MHz
Connectivity	Input	RGB	Analog D-SUB, DVI-D, DisplayPort 1.2	Analog D-SUB, DVI-D, DisplayPort 1.2	Analog D-SUB, DVI-D, DisplayPort 1.2	Analog D-SUB, DVI-D, DisplayPort 1.2
		Video	HDMI 2.0 (2)	HDMI 2.0 (2)	HDMI 2.0 (2)	HDMI 2.0 (2)
		HDCP	HDCP 2.2	HDCP 2.2	HDCP 2.2	HDCP 2.2
		Audio	Stereo Mini Jack	Stereo Mini Jack	Stereo Mini Jack	Stereo Mini Jack
		USB	Only F/W Upgrade	Only F/W Upgrade	Only F/W Upgrade	Only F/W Upgrade
	Output	RGB	DP1.2 (Loop-out)	DP1.2 (Loop-out)	DP1.2 (Loop-out)	DP1.2 (Loop-out)
		Audio	Stereo Mini Jack	Stereo Mini Jack	Stereo Mini Jack	Stereo Mini Jack
		External Control	RS232C (In / Out), RJ45	RS232C (In / Out), RJ45	RS232C (In / Out), RJ45	RS232C (In / Out), RJ45
	External Sensor		Detachable Type (IR, Ambient)	Detachable Type (IR, Ambient)	Detachable Type (IR, Ambient)	Detachable Type (IR, Ambient)
	Wi-Fi / Bluetooth		N/A	N/A	N/A	N/A
Tuner		N/A	N/A	N/A	N/A	
Power	Type		Internal	Internal	Internal	Internal
	Power Supply		AC 100 - 240 V~ (+/- 10 %), 50/60 Hz	AC 100 - 240 V~ (+/- 10 %), 50/60 Hz	AC 100 - 240 V~ (+/- 10 %), 50/60 Hz	AC 100 - 240 V~ (+/- 10 %), 50/60 Hz
	Power Consumption	Max / Typical (W / H)	187 / 102	297 / 180	143 / 79	297 / 180
		BTU (Max)	638	1013	488	1013
	Sleep Mode	< 0.5W	< 0.5W	< 0.5W	< 0.5W	
	Off Mode	< 0.5W	< 0.5W	< 0.5W	< 0.5W	
Dimensions	Set Dimension (W x H x D)		40.15" x 22.6" x 3.8"	47.6" x 26.8" x 3.7"	40.15" x 22.6" x 3.8"	47.7" x 26.9" x 3.8"
	Package Dimension (W x H x D)		45.4" x 28.3" x 11.6"	53.3" x 31.8" x 12.5"	45.4" x 28.3" x 11.6"	53.3" x 31.9" x 12.6"
	VESA Mount		600mm x 400mm	600mm x 400mm	600mm x 400mm	600mm x 400mm
	Bezel Width (mm)		1.15mm (U/L), 0.55mm (R/B)	1.15mm (U/L), 0.55mm (R/B)	1.15mm (U/L), 0.55mm (R/B)	1.15mm (U/L), 0.55mm (R/B)
Weight	Set Dimension (W x H x D)		34.6 lbs	46.29 lbs	34.6 lbs	46.3 lbs
	Package Dimension (W x H x D)		47.6 lbs	60.4 lbs	47.6 lbs	62.2 lbs
Operation	Operating Temperature		0°C - 40°C	0°C - 40°C	0°C - 40°C	0°C - 40°C
	Humidity		10-80%	10-80%	10-80%	10-80%
	Key		Extreme Narrow Bezel	Extreme Narrow Bezel	Extreme Narrow Bezel	Extreme Narrow Bezel
Features	Special		ACM Support (Advanced Color Management), Auto Source Switching & Recovery, Haze 25%, Temperature Sensor, RS232C / RJ45 MDC, Plug and Play (DDC2B), Videowall (15x15 (OSDI)), Videowall Daisy Chain (10x10), Pivot Display, Image Rotation, Button Lock, DP 1.2 Digital Daisy Chain (Supporting UHD Resolution, HDCP Support), Smart F/W Update, Clock Battery (80 Hrs Clock Keeping)			
	Safety		UL 60950-1			
Certification	EMC		FCC Part 15, Subpart B Class A			
Accessories	Included		Quick Setup Guide, Warranty Card, DP Cable, Stereo to DB9 Cable, Power Cord, Remote Controller, Batteries			
	Optional	Mount	WMN-46VD	WMN-55VD	WMN-46VD	WMN-55VD
	Media Player Option Type		SBB (Slide In), Signage Player Box	SBB (Slide In), Signage Player Box	SBB (Slide In), Signage Player Box	SBB (Slide In), Signage Player Box
Warranty	Standard Warranty		3 Years Onsite (Parts / Labor / Backlight)	3 Years Onsite (Parts / Labor / Backlight)	3 Years Onsite (Parts / Labor / Backlight)	3 Years Onsite (Parts / Labor / Backlight)

## Connectivity

- Control In
- USB
- RJ45
- DVI / RGB / MagicInfo In
- HDMI 1
- HDMI 2
- DisplayPort In
- RS232C In
- RS232C Out
- IR Out
- Audio In
- Audio Out
- DisplayPort Out (Loop Out)



## Learn More

[samsung.com/business](http://samsung.com/business) [insights.samsung.com](http://insights.samsung.com) [samsung.com/b2bdigitalsignage](http://samsung.com/b2bdigitalsignage)

## Product Support

1-866-SAM4BIZ

## Follow Us

[youtube.com/samsungbizusa](https://www.youtube.com/samsungbizusa) [@SamsungBizUSA](https://twitter.com/SamsungBizUSA)

**SAMSUNG**